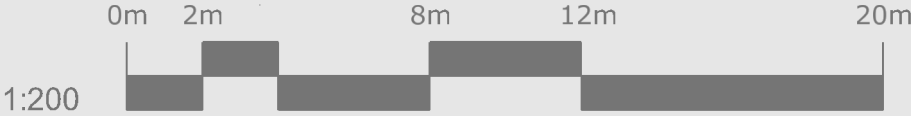


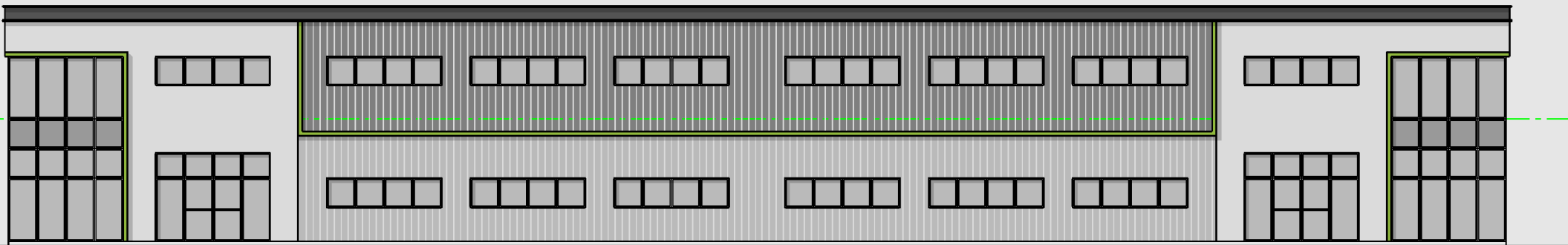
Option 3 - Class B2-B8



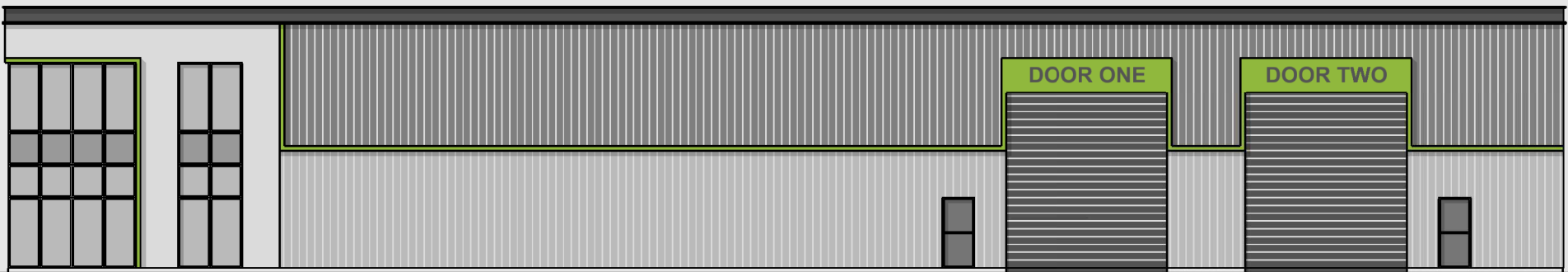
LARGE UNIT - Front Elevation



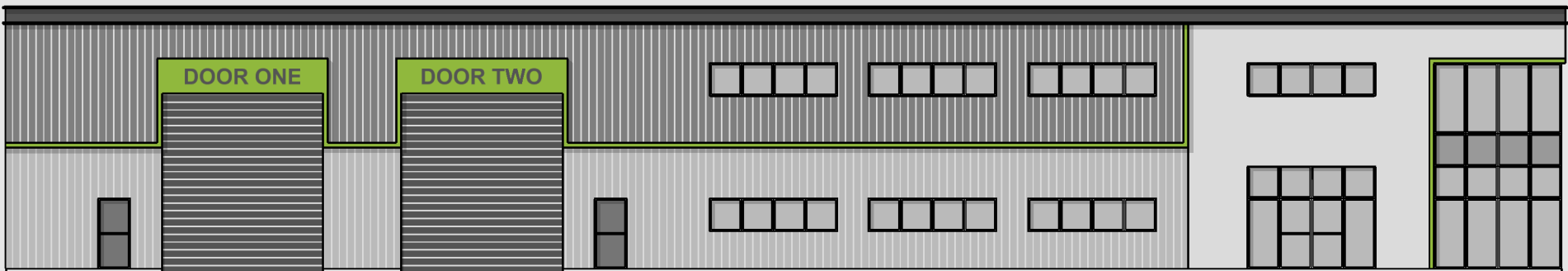
LARGE UNIT - Back Elevation



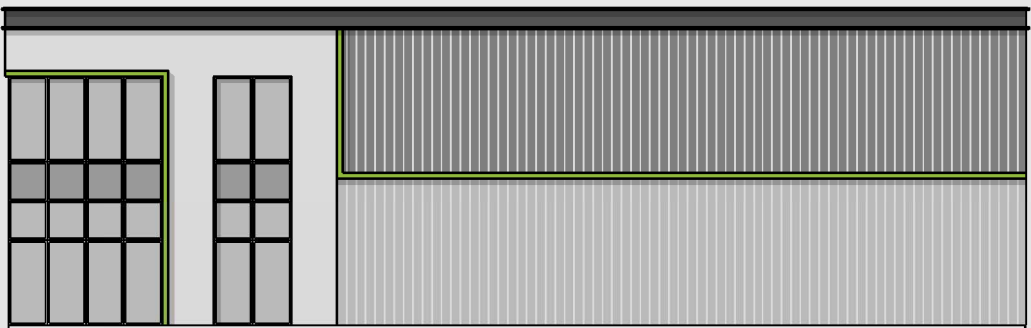
DOUBLE UNIT - Front Elevation



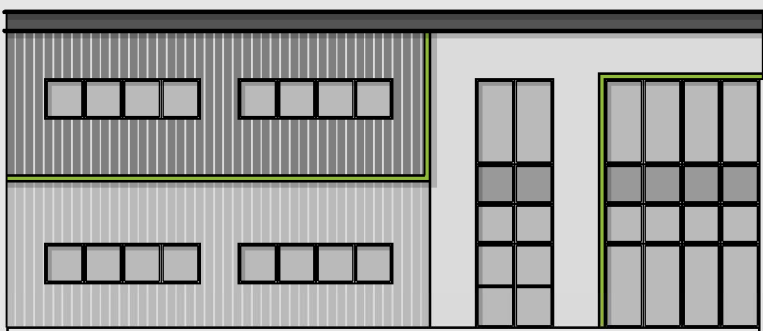
DOUBLE UNIT - Side Elevation



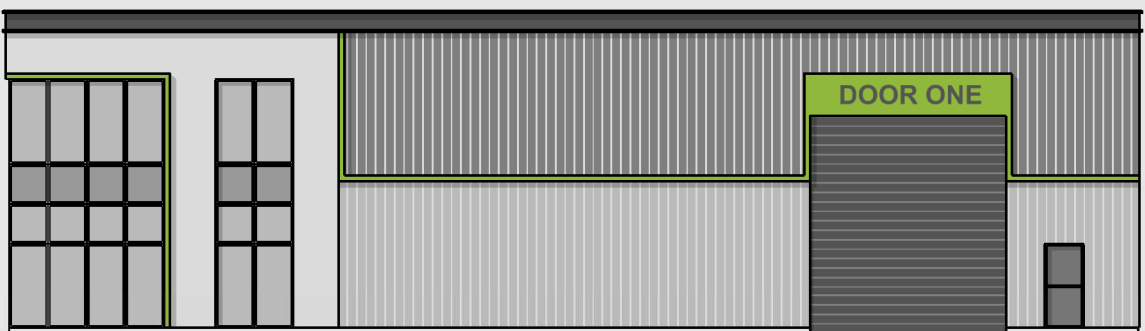
SINGLE UNIT - Front Elevation



SINGLE UNIT - Side Elevation



SMALL UNIT - Front Elevation



SMALL UNIT - Side Elevation

UNITS	CLASS	AREA (ft²)
Unit 1	B2/B8	15,900
Unit 2	B2/B8	15,900
Unit 3	B2/B8	15,900
Unit 4	B2/B8	7,675
Unit 5	B2/B8	40,750
TOTAL		96,125



NOTES:
© Copyright of this drawing remains vested with V4 Architects Ltd. Use of this drawing for all purposes is solely connected to the site it is related too. Use of the drawings for third parties must be agreed with V4 Architects Ltd. Please ensure the drawing is printed to scale by referencing the scale bar. For construction check and use figured dimensions only. All dimensions are to be checked on site prior to any works. If you have any questions on the drawings, please do not hesitate to contact us at: studio@v4architects.com 01908 464 325 V4 Architects Ltd.

PROJECT:
Woodlands
Business Park

CLIENT:
Mutual Finance

DRAWING SHEET:
Indicative
Sketch Elevations -
Option 1

DRAWING NUMBER & REVISION:
V41072-SK22

DATE:
Nov 2025

SCALE:

STATUS:
FOR INFORMATION



V4 Architects Ltd
Registered Office: Studio AG Witan
Studios 300 Witan Gate
Central Milton Keynes MK9 1EJ
Registered in England: No. 13396442

